

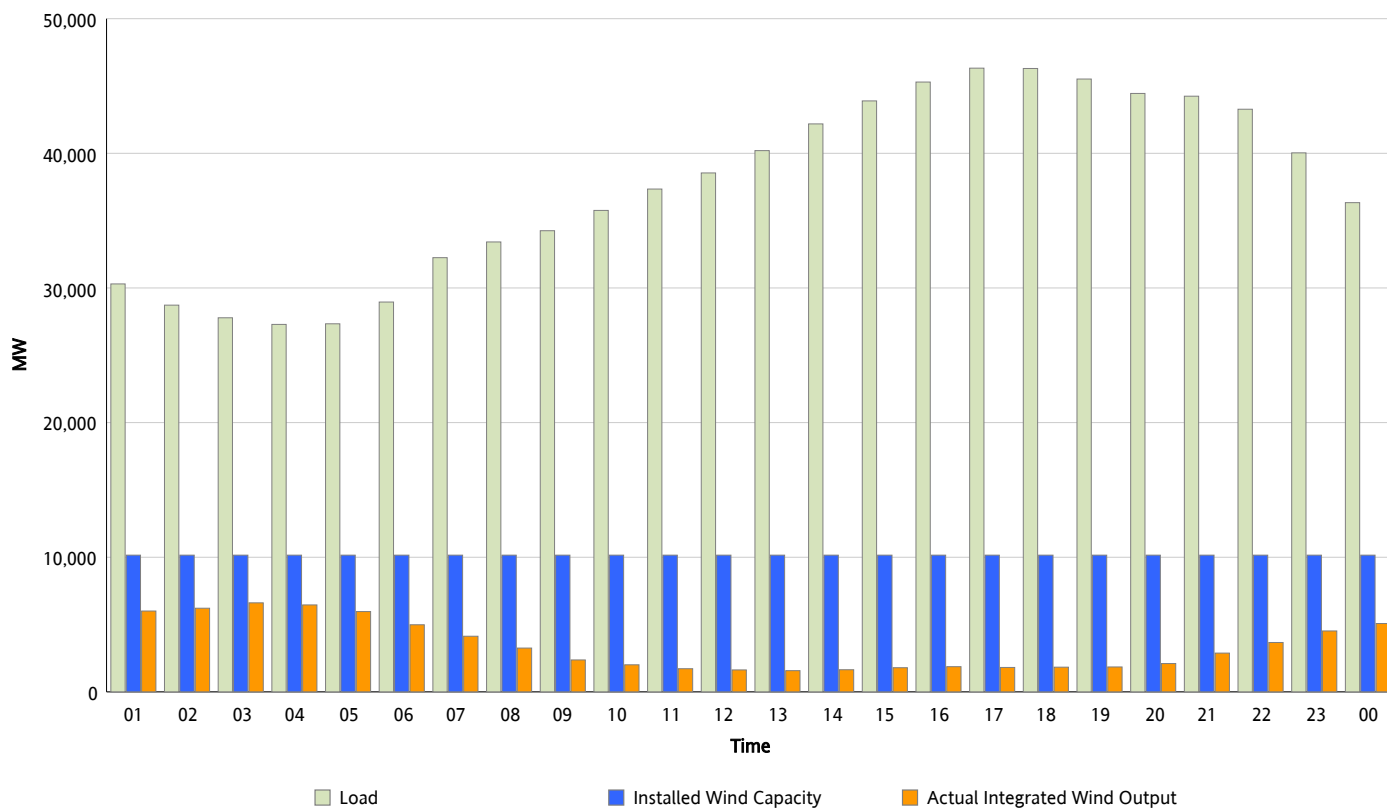


ERCOT Grid Operations

Wind Integration Report : 05/16/2013

Peak Load	46,328 MW
Load Peak Hour (HE)	17
Wind Over Peak	1,812 MW
Wind Record 05/02/13	9,674 MW
Max Wind Value*	6,750 MW
Wind Peak Time	02:31
Wind Integration %	24.25 %

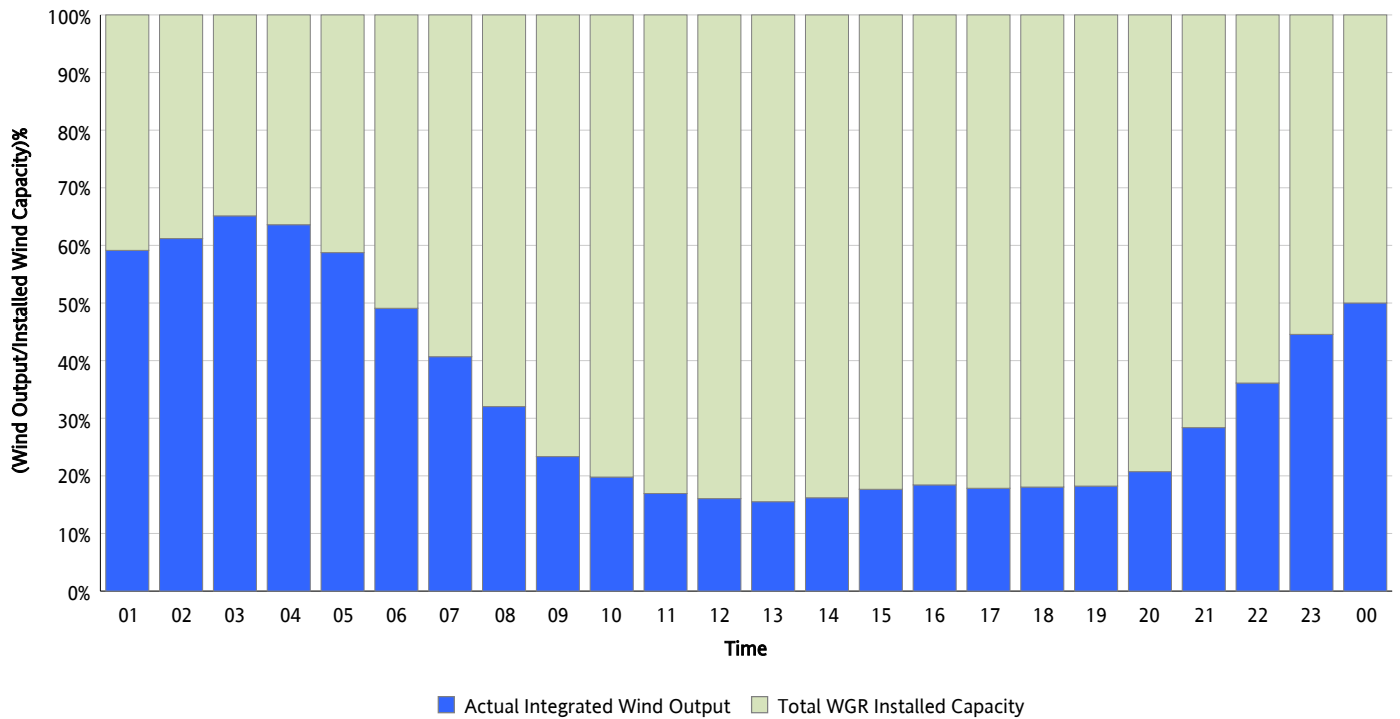
Hourly Average Actual Load vs. Actual Wind Output
05/16/2013



** Wind Record and Wind Max represent instantaneous values and the rest of the values are integrated over the hour*

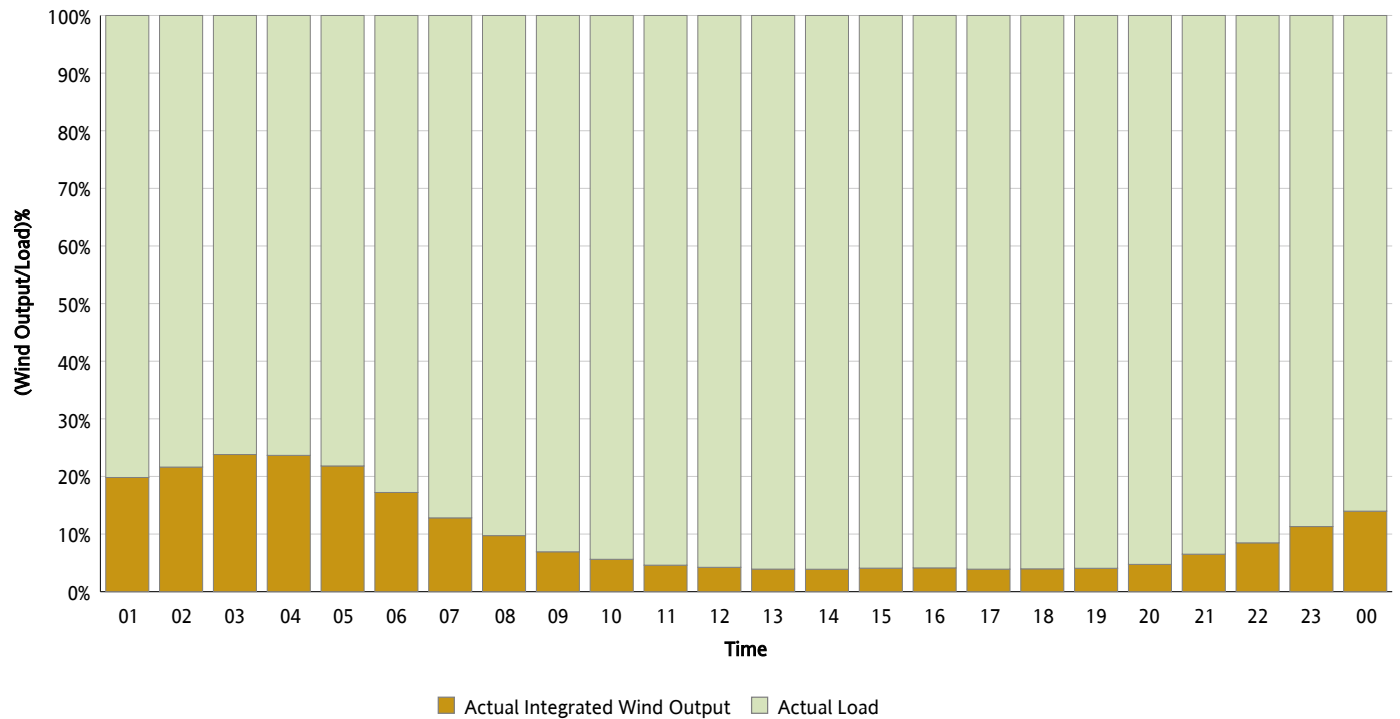
Actual Wind Output as a Percentage of the Total Installed Wind Capacity

05/16/2013



Actual Wind Output as a Percentage of the ERCOT Load

05/16/2013



ERCOT Load vs. Actual Wind Output

05/09/2013 - 05/16/2013

